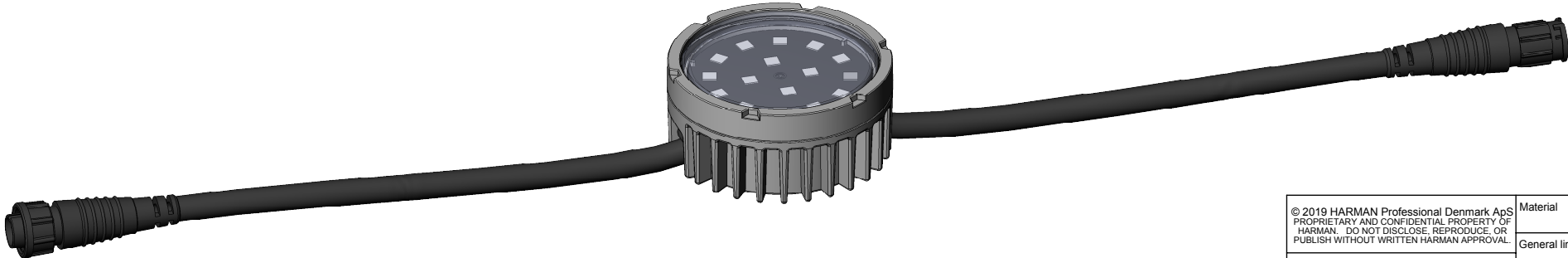
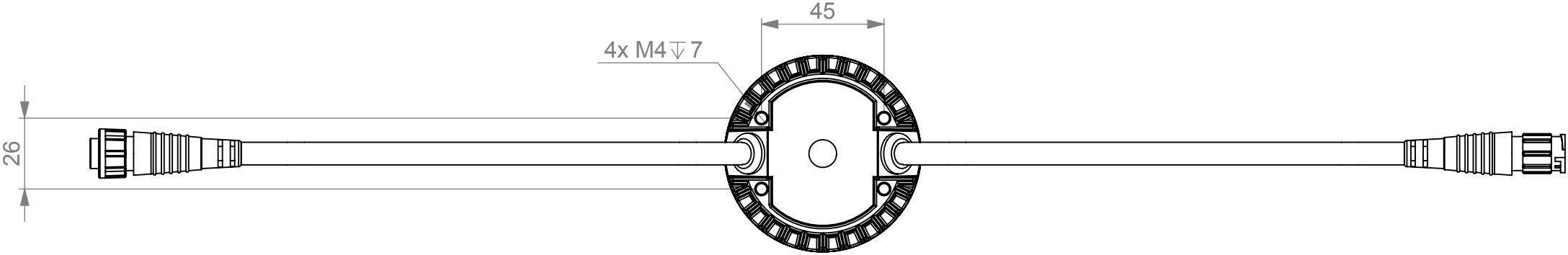
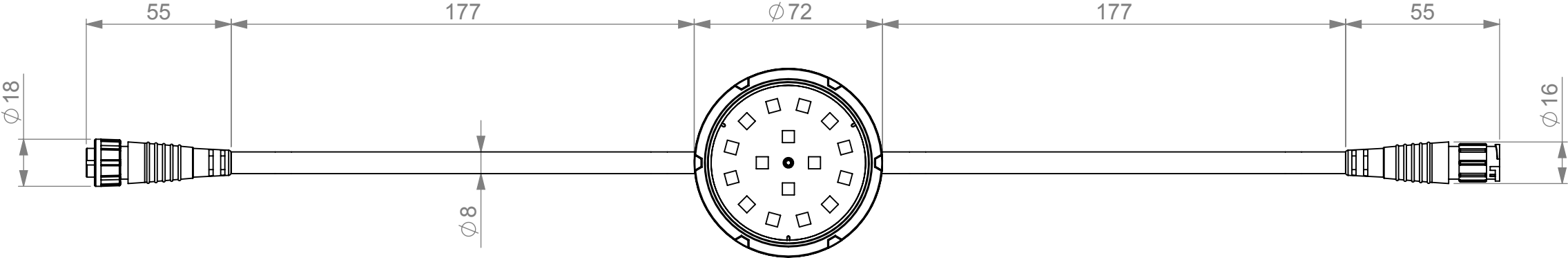
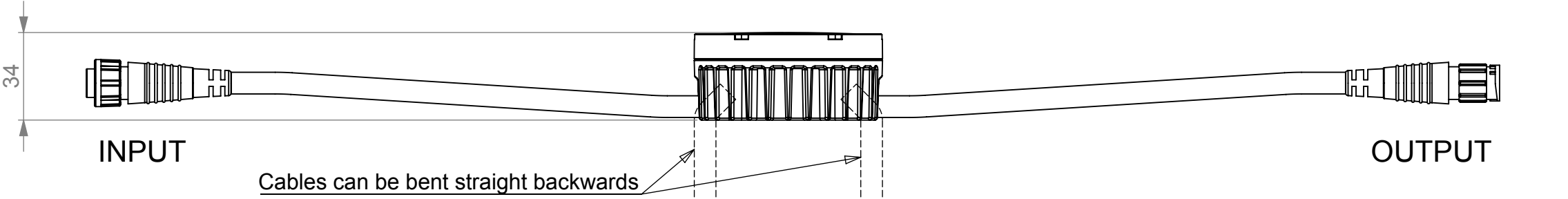




REVISION HISTORY			
DATE	REV.	DESCRIPTION	BY
25.05.2016	A	First release	rd_lto
19.08.2016	B		rd_lto
10.01.2018	C		rd_lto
15.04.2019	D		rd_lto



Direct fixture to fixture connection allows up to 0,5 m. center to center pitch.

<div>© 2019 HARMAN Professional Denmark ApS PROPRIETARY AND CONFIDENTIAL PROPERTY OF HARMAN. DO NOT DISCLOSE, REPRODUCE OR PUBLISH WITHOUT WRITTEN HARMAN APPROVAL.</div> <div>ROHS RESTRICTION OF HAZARDOUS SUBSTANCES ALL MATERIALS USED IN THIS PART MUST BE ROHS COMPLIANT. SUPPLIER SHALL PROVIDE A CERTIFICATE OF ROHS COMPLIANCE WITH THE FIRST ARTICLE.</div>	Material	FIRST ANGLE PROJECTION 	 HARMAN			HARMAN Professional Denmark ApS Oluf Palmes Allé 44 DK 8200 Aarhus N		
	General linear tolerance		TITLE					
	General angular tolerance	Surface treatment	EXTERIOR DOT-HP, CLEAR FRONT					
	General geometrical tolerance	Color Grey	NO. REV					
	DIMENSIONS SHOWN ARE FOR REFERENCE AND INSPECTION ONLY. REFER TO CAD MODEL PROVIDED WITH THIS DRAWING FOR OVERALL DEFINITION OF PART GEOMETRY.	Project number	SIZE A3	SCALE 1:2	UNIT mm	DO NOT SCALE DRAWING	SHEET 1	OF 1